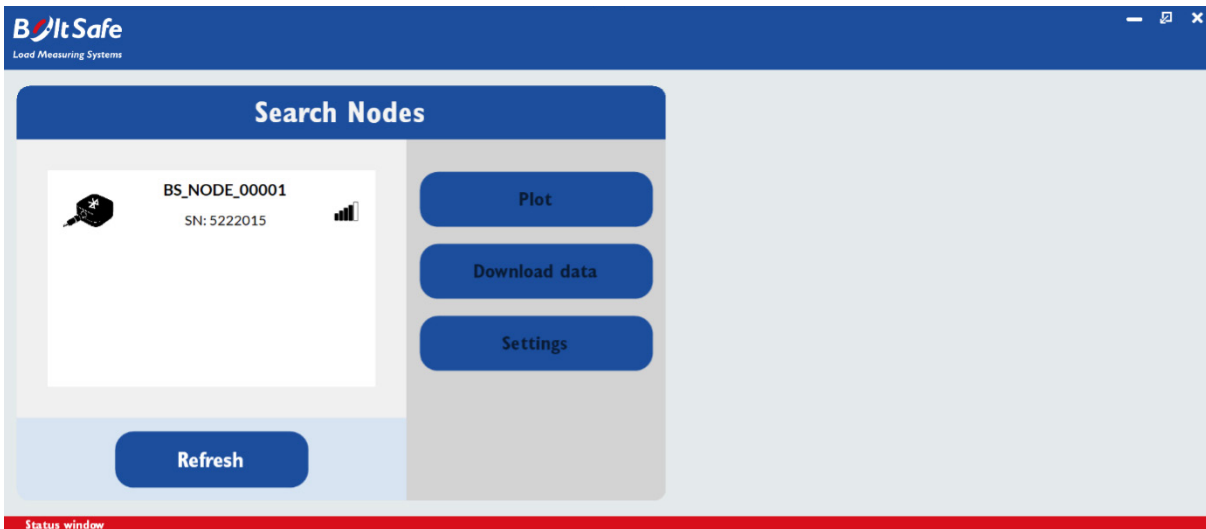


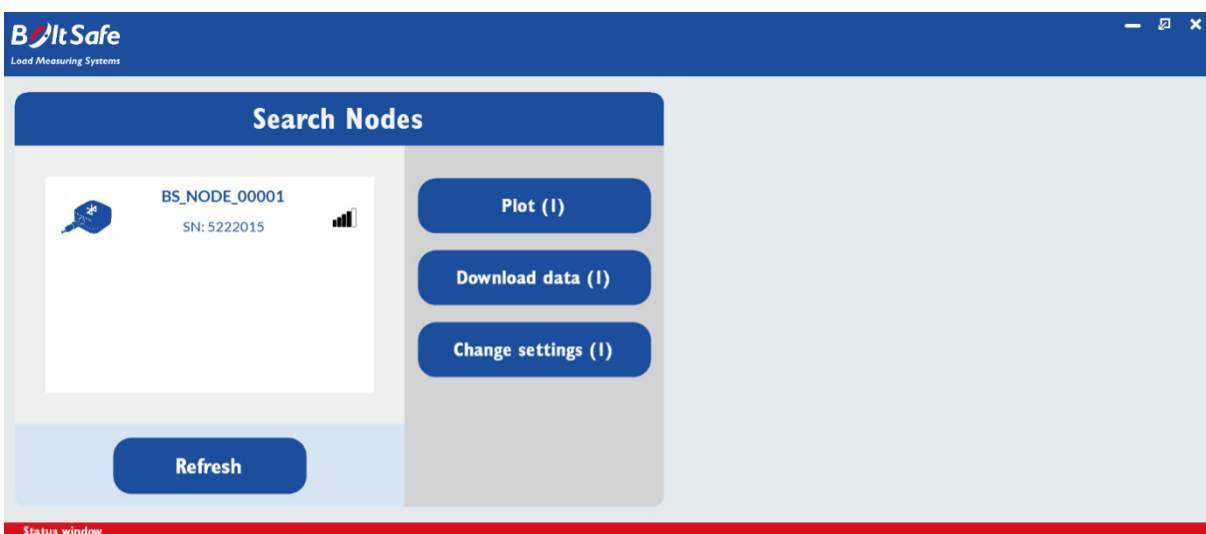
## 1. Setup of the BLE-node

Setup and readout of the BLE-node is only possible with BoltSafe Connect software.

- 1.1** Start the BoltSafe Connect software and search for available BLE-nodes.

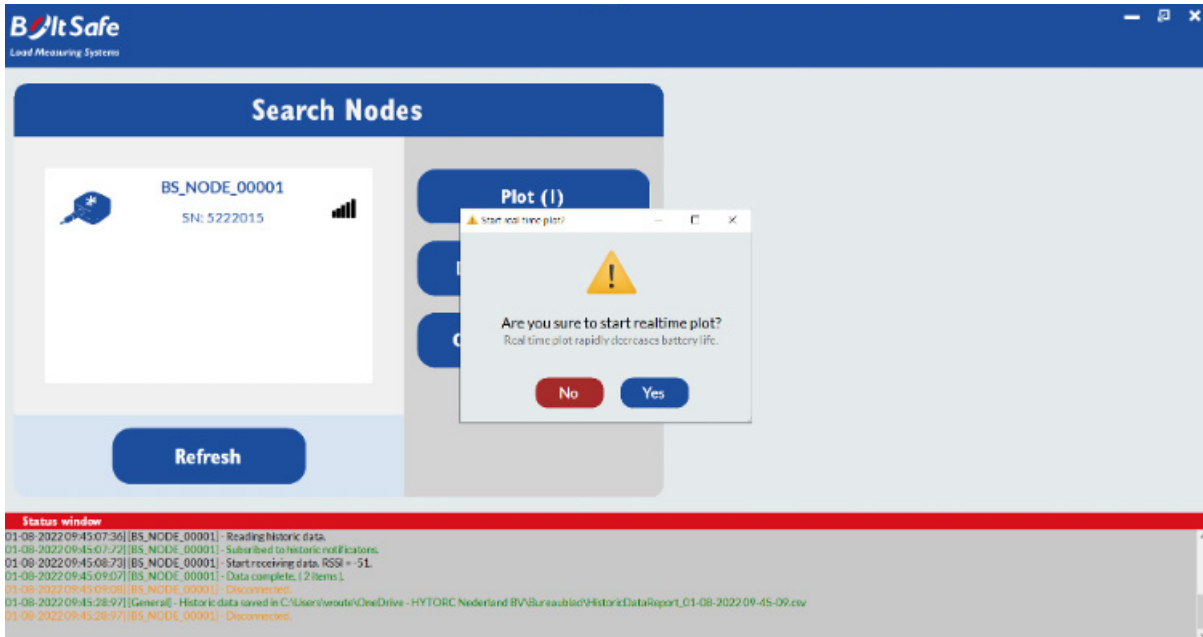


- 1.2** Select one or multiple nodes to perform an action:
- Plot real-time data (plot has a maximum of 4 nodes simultaneously)
  - Download historical data saved in memory
  - Change general settings of the node

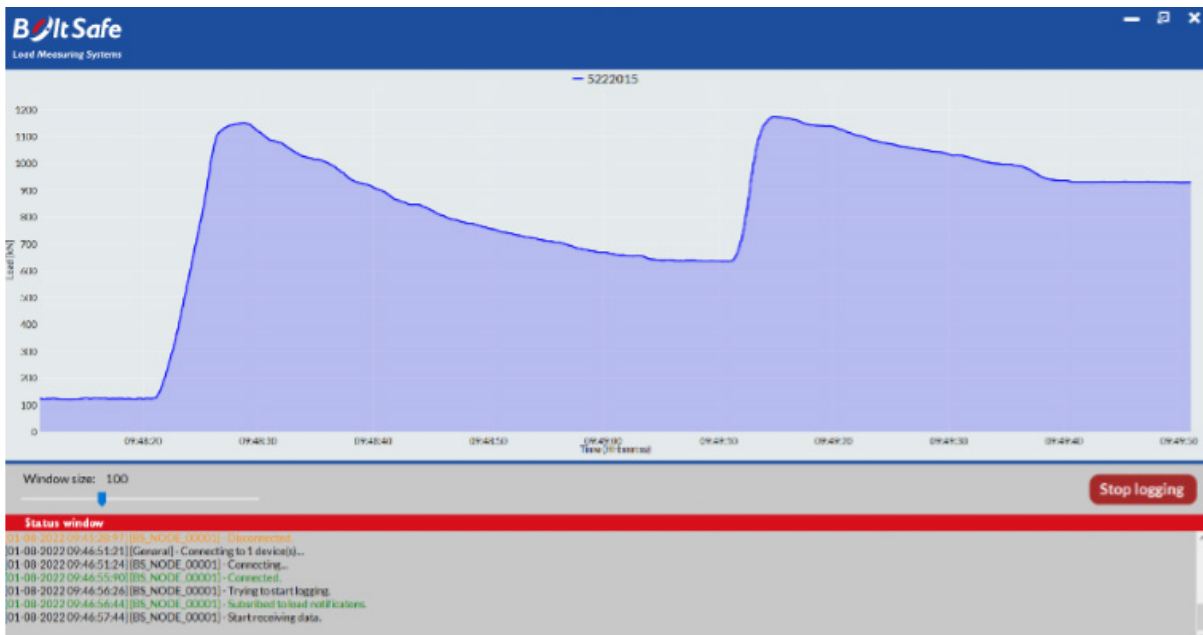


## 2. Real-time plot

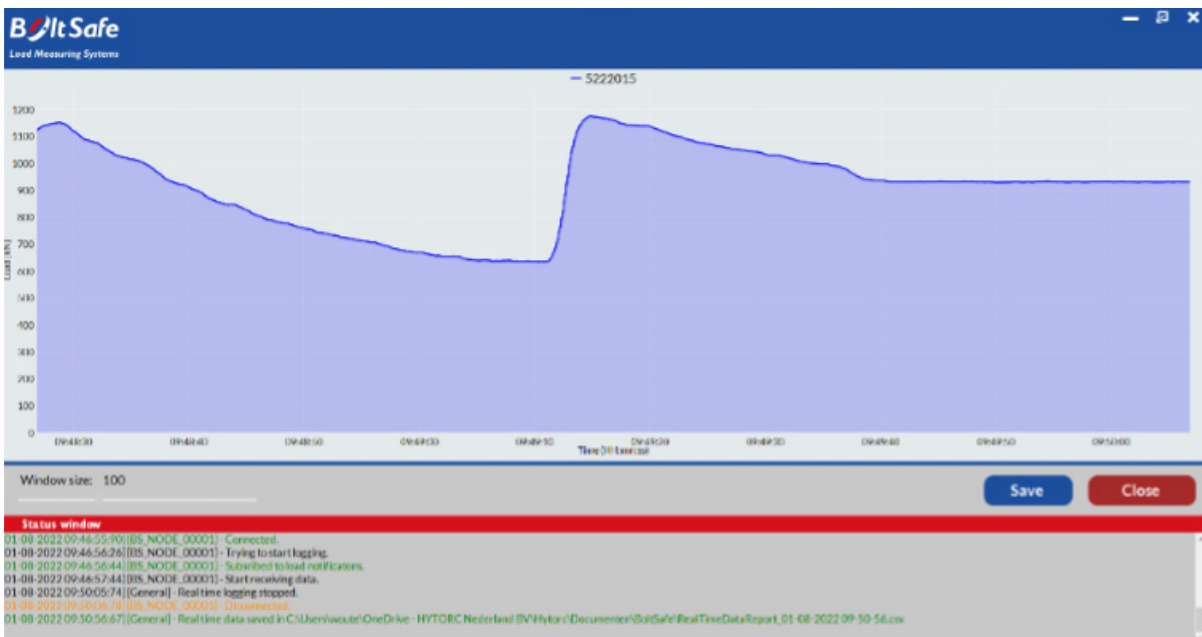
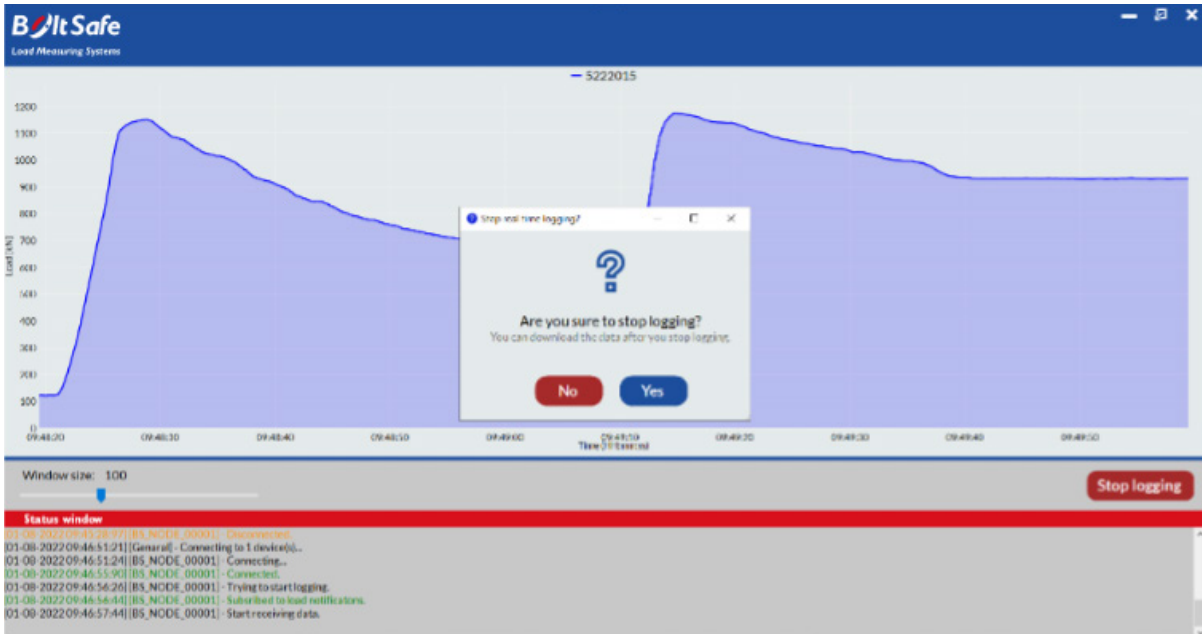
**2.1** The software asks if you are sure to start a real-time plot because this function consumes a lot of battery power. Hit “yes” if you want to proceed.



**2.2** Plotting the current load is now active, hit “Stop logging” to stop.

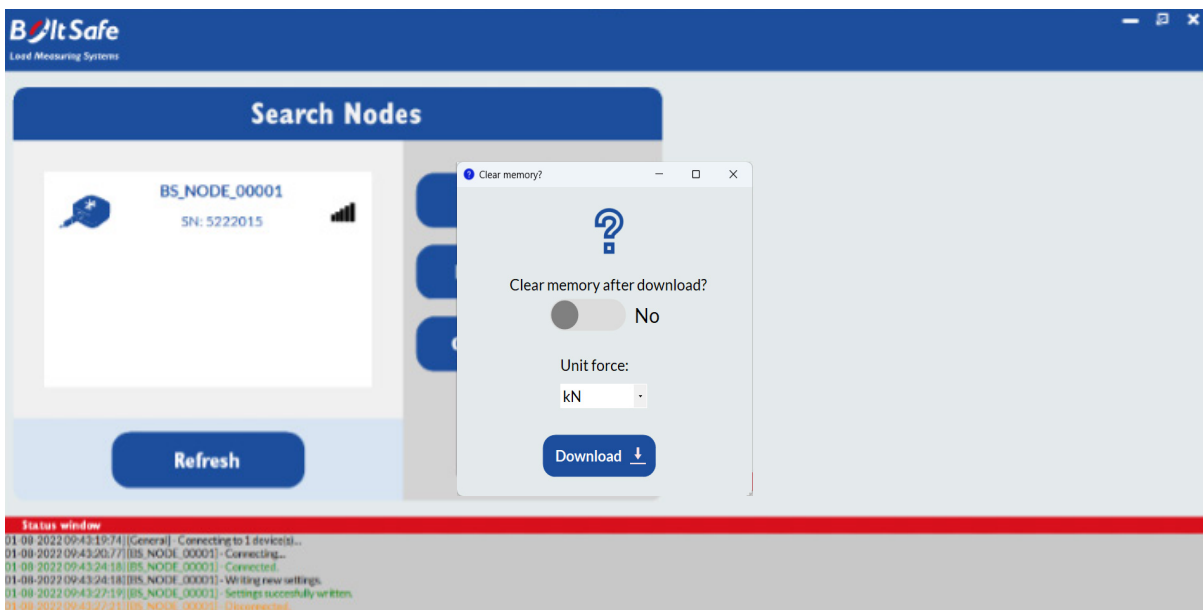


**2.3** After plotting is stopped, you have the option to save the recorded data or to close the window without saving.

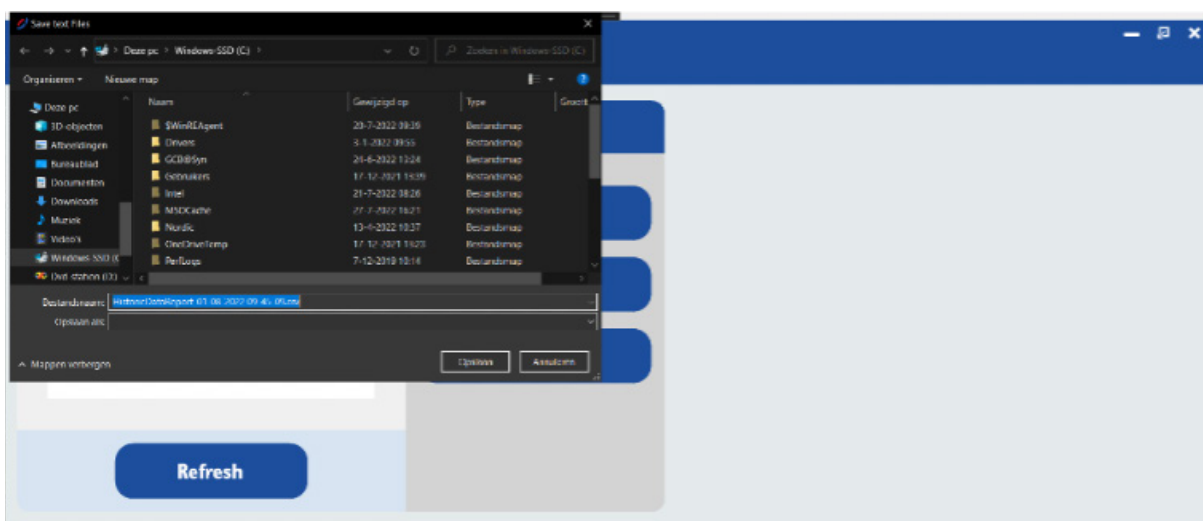


### 3. Battery life

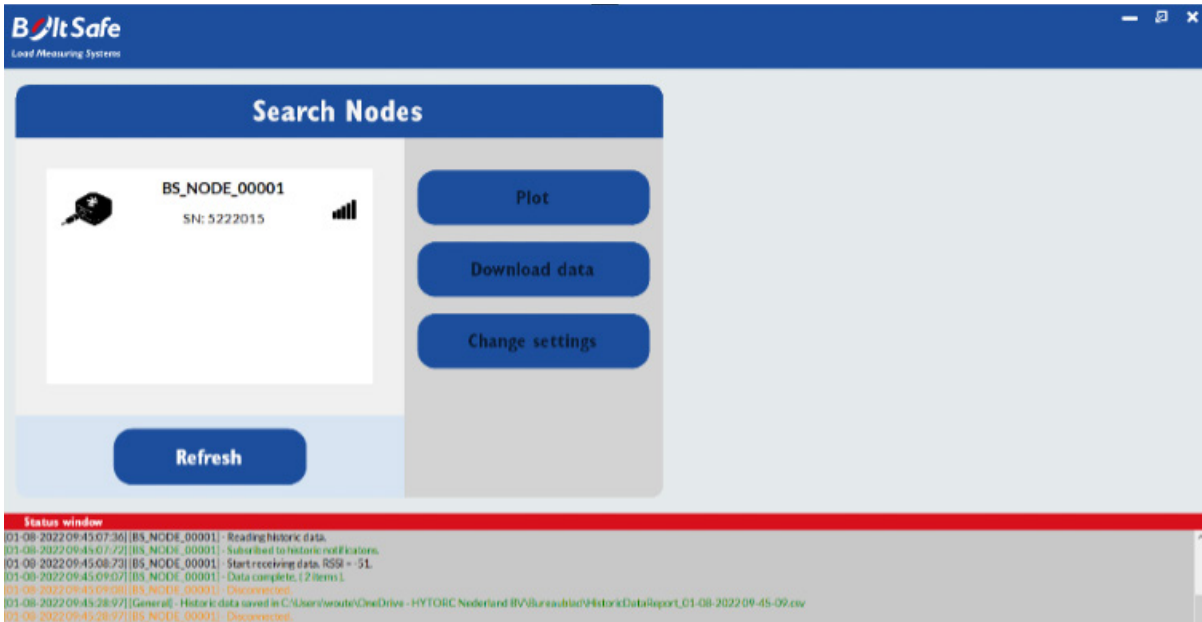
**3.1** After clicking “Download Data” you get the option to clear the memory of the node after download. If the memory is cleared, all current data is lost and it is not possible to download this data anymore. However, this might be beneficial because the node has access to its total memory again whilst the old data is stored in the downloaded CSV-file.



**3.2** Select a location to save the file.

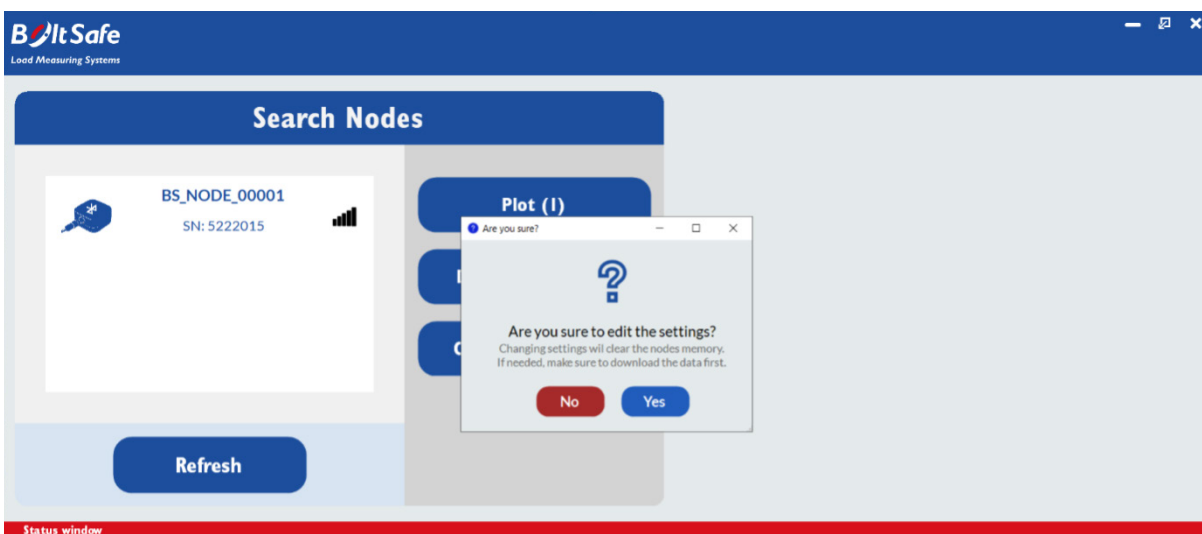


**3.3** When status windows reports “Data complete” the download has finished.

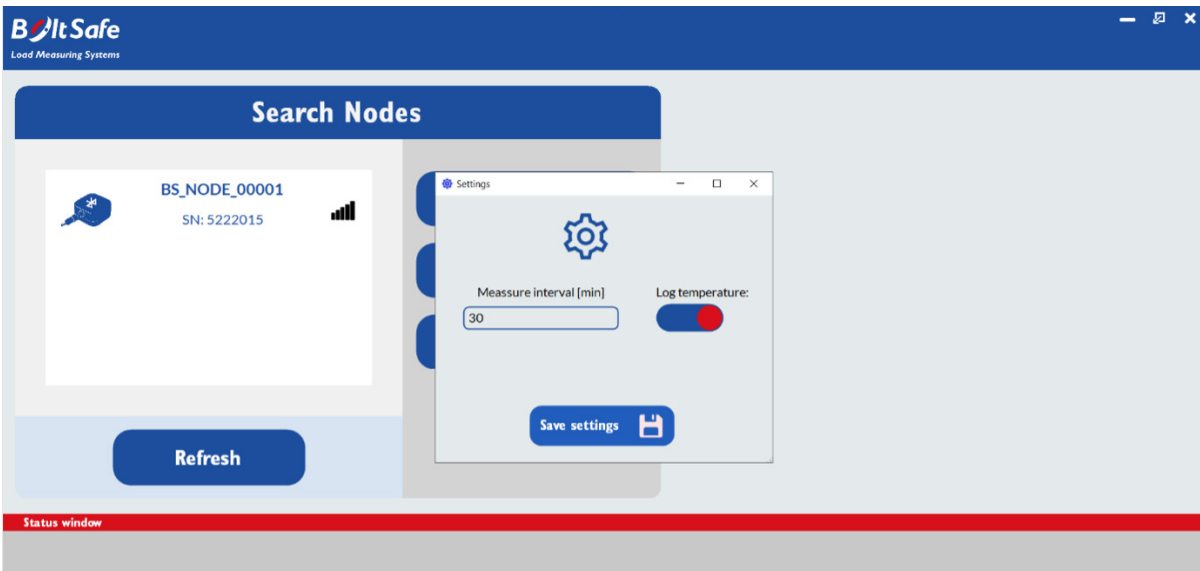


## 4. Settings

**4.1** Before changing the settings you are asked to confirm this, because after changing the settings, the memory and therefore all data from the BLE-node are cleared. So be sure to download old data first before changing any settings.



- 4.2** Select the logging interval in minutes and specify if you want to save the temperature as well.



- 4.3** When the status window reports “Settings succesfully written” the settings are saved.

